

Manuscript Preparation Guidelines for the Papers Submitted to EENET2026

Pituk Bunnoon^{1*}, Athirot Mano¹ and Sahapong Somwong²

¹Department of Electrical Engineering, Faculty of Engineering, Rajamangala University of Technology Srivijaya

²Department of Computer Engineering, Faculty of Engineering, Prince of Songkla University

E-mail: pituk.b@rmutsv.ac.th*

Abstract

This document explains and demonstrates how to prepare your camera ready manuscript for the 18th Conference of Electrical Engineering Network of Rajamangala University of Technology 2026 (EENET2026). Your manuscript will appear exactly the same as it is received. Please read the guidelines and follow the instructions in this text. For the MS-Word 2003 users, the best is to use the pre-defined components found in this template.

Keywords: manuscript format, manuscript guidelines, text style

1. General Information

Contributed papers are limited to 4 pages. These limits include all figures, tables, references, and author's biography. Please do not insert any page numbers in your paper.

Usually, each paper contains the following components: i.e. title, author's name, author's affiliates, abstract, sections and contents, acknowledgement (if preferred), references, and authors' biographies (if applicable).

Please do not include any academic positions or titles to the author name. The affiliations require only the author institution. Country of the institution can be included if preferred. Different affiliations can be indicated by using superscript numbers as shown in this example. This superscript is not required for single author articles. An email is required only from the corresponding author. Please note that the corresponding author may not be the first author.

2. Style and Format

2.1 Paper Size and Paragraphs

Please prepare your manuscript on A4 (21 cm x 29.7 cm) papers. The margins for the top, bottom, left, and right of the paper are 29 mm, 29 mm, 21 mm, and 21 mm, respectively.

Title, authors' names and authors' affiliations are in single column. The rest of the paper is in two columns with 81 mm column widths and 6 mm spacing.

All text are in single space. Different paragraphs are indicated by using an indentation of 6.3 mm. Different components, e.g. Title and authors' names, and between sections, are spaced with an extra empty line.

2.2 Font Style

Font type should mimic Times New Roman. Alternatives such as Nimbus Roman, Liberation Serif can also be used. Default style and size for the content is normal and 10 pt. The different styles and sizes for different paper components are listed in Table 1.

Table 1 Font styles and sizes for different manuscript components

Component	Style	Size
Title	Bold	12
Authors' names	Bold	10
Authors' affiliates	Regular	10
Sections (all levels)	Bold	11
Content	Regular	10
Table contents	As appropriate	9
Captions	Regular	8

2.3 Abstract

Abstract heading font style and sizes are bold and 11 points. Abstract contents font style and size are bold and 10 points.

2.4 Sections

Sections are in upper and lower case bold letter. They should appear with sequential numbers, left-hand justified. Subsections such as 2.1 and 2.1.1 can be used but subsections deeper than 3 levels, e.g. 2.1.1.1 are not recommended.

2.5 References

The heading of the References section must not be numbered. The references will be numbered in order of

appearance. Do not use “Ref. [3]” or “Reference [3]” except at the beginning of the sentence, e.g. “Reference [3] shows ...”. Multiple references are numbered together (e.g. [1 – 3]). Please avoid listing references that do not appear in the text. The reference format is the standard IEEE one. The guideline can be found at <http://www.ieee.org/documents/ieeecitationref.pdf>.

The references given in this template include a book [1], a handbook [2], a journal article [3], and a conference article [4]. References in Thai can also be listed using English with “(in Thai)” at the end of the list as shown in [5].

2.6 Equations

Equations should be numbered and should be placed on separated lines. The equation number should be placed in parenthesis and flushed with the right-hand margin. MS-Word 2003 users can make this possible by using 3 columns table with invisible borders.

$$a + b = c \quad (1)$$

2.7 Figures and Tables

All figures and tables should be centered on the column. Please make sure that the resolution of the figure is high enough for print quality (300 dpi).

Fig. 1 illustrates an example of a figure. Please do not show figure that you have not mention in the main text.

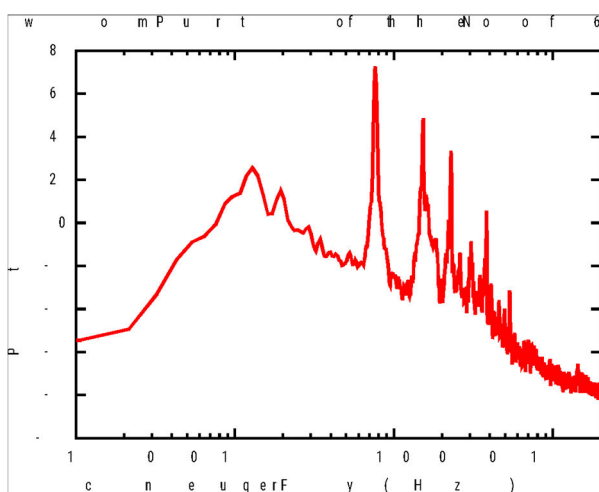


Fig. 1 An example of a figure

The caption format is given in Table 1. All captions are centered. Figure caption must be used in the form “Fig. 1”. The caption is placed below the figure.

Table caption must be used in the form “Table 1”. The caption is placed above the figure. Table 1 shows and example of a table.

3. Discussion

This guideline purposes are to help authors to prepare their manuscript for a good readability. The unmentioned document parameters are left for author choice of preference. However, the best is to prepare your document based on this MS-Word 2003 template. This template is available at <https://eenet2026.rmuts.ac.th/>.

4. Conclusion

The authors are fully responsible for their manuscripts. Please check your manuscript carefully before submission.

References

- [1] J. K. Adams, "Deep learning applications in computer vision," *IEEE Trans. Image Process.*, vol. 28, no. 7, pp. 3125-3134, Jul. 2019. doi: 10.1109/TIP.2019.2901234. (บทความวิจัยในวารสาร)
- [2] L. M. Chen and S. R. Lee, "A novel approach for secure data transmission," in *Proc. IEEE Int. Conf. Commun.*, Kyoto, Japan, 2020, pp. 1024-1029. (บทความวิจัยใน Proceeding)
- [3] B. K. Smith and D. J. Miller, *Digital Signal Processing*, 4th ed. New York, NY, USA: McGraw-Hill, 2018. (หนังสือ)
- [4] C. P. Davies, "Introduction to neural networks," in *Handbook of Artificial Intelligence*, 2nd ed., J. R. Kim, Ed. London, UK: Springer, 2019, pp. 45-67. (บทจากหนังสือ)
- [5] P. J. Green, "Optimization of wireless sensor networks," Ph.D. dissertation, Dept. Elect. Eng., Univ. California, Berkeley, CA, USA, 2021. (วิทยานิพนธ์)
- [6] Google, "TensorFlow," *Google AI*, 2024. [Online]. Available: <https://www.tensorflow.org>. [Accessed: Jul. 14, 2025]. (เว็บไซต์)
- [7] N. S. Rao, "Adaptive control systems," Tech. Rep. 123, Elect. Eng. Dept., MIT, Cambridge, MA, USA, 2023. (รายงานทางเทคนิค)

Scanned
Picture

2 cm x 2 cm

About the authors the author should include a brief biography, research interest and scanned photo in the camera-ready manuscript only.